

Ann Yarmal

Pastel and poetry

People, pets and places

Memberships:

Arts Alliance of the White Mountains

Arizona Pastel Artists Association

Ann Yarmal is a local pastel artist and poet, having lived in Show Low for six years. Prior to this time her professional career was as a librarian where she used her artistic skills to create large dimension collages for the Greenwich Library and was also responsible for bringing to Greenwich many well known American poets through "The Poet's Voice".

She helped to found, with the restaurant owner, "Wednesday Night at Curley's," an ongoing poetry gathering place in Stamford, Connecticut.

Prior to moving to Show Low, Ann spent yearly vacations with family members who have been residents of Arizona since 1952.

Ann's work has been shown in the Show Low Historical Museum, and the Greenhouse Nursery. Her pastel paintings are often on exhibit with the Arts Alliance shows for the White Mountain Symphony Orchestra, the Dance Academy and other special exhibits.

In the Spring of 2008 she held a show with artist, Laurie Dee Acree at Mountain Meadow Clubhouse for the Cedar Ridge Development Corporation and signed a contract to be "Artist in Residence" for their soon to be constructed Art Gallery in Show Low.

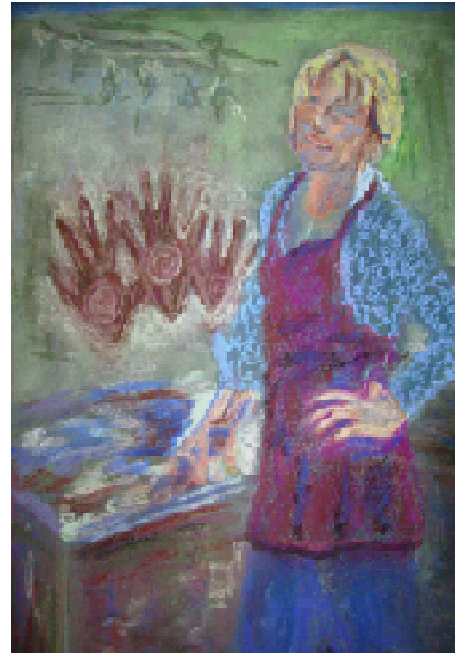
Much of Ann's work is of local musicians at work and the people who come to enjoy their performances.

She also paints pets and has painted a number of local people's dogs, birds, and horses.

"My art is an expression of my attempt to capture the moment, whether it be the "what now, Mom!" Of my busy daughter, or the "I love you too!" look from my pets."

"I try to reflect that instant in time with a quick line, a dash of color, a fleeting composition, and a sense of my own response."

Cindy, at the Greenhouse



"I keep my skills going and learn new ones through workshops and courses at NPC in Show Low and through workshops with Alan Garns in Mesa as well as whatever opportunities present themselves."

Fees for Commissioned Work:

\$50.00 to \$200 depending on size and complexity.

Prints of original work: \$20.00

Costs for frames are additional and may be arranged with the artist.

Ann Yarmal 928-532-5900

Ayarmal@cableone.net



Pita, at the 2008 Barry Wonderful Pet